

IN&C

N&C

Premier Infinity Shower Deck
with unique waterproof sliding drain system

Installation Instructions



Typical floor joist construction with noggins



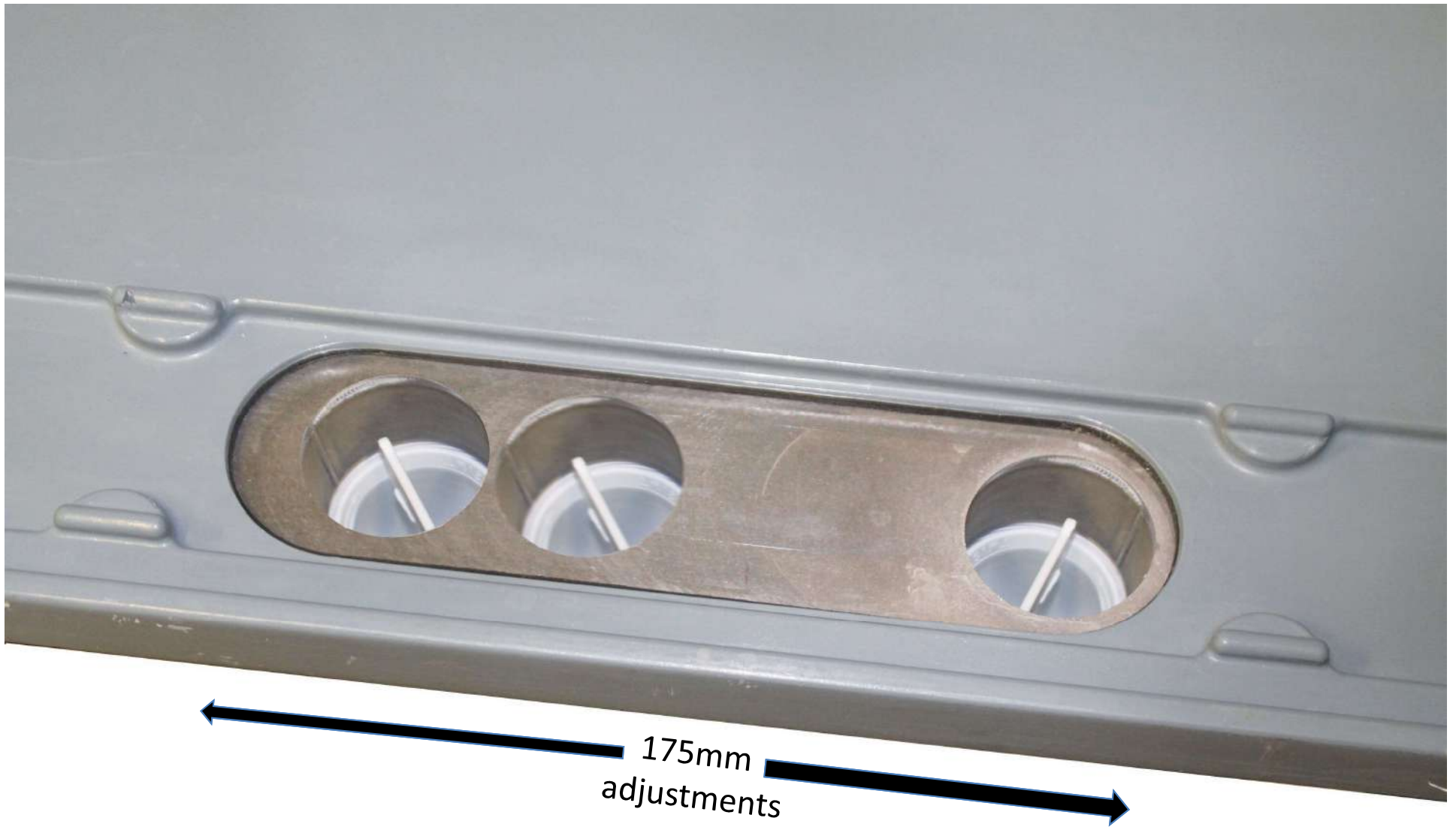
Ensure the area you are working on is clear and free of clutter



Mark the floor area where the N&C Premier Infinity Shower Deck is to be installed



Cut the timber floor or solid floor area as appropriate to accommodate the 28mm thick shower deck.



Slide the unique factory fitted linear drain assembly to miss the joists in any location



Place deck into cut out floor area checking for levels.



Attach your waste pipe to the trap making sure enough waste pipe has been attached for your final waste connection to be made outside the deck area. Utilise either the straight or bent connectors (supplied) to suit your plumbing



Insert noggins were the deck overhangs a joist by more than 100mm. Insert additional noggins were required according to waste position. Place the sliding drain deck in position where the timber floor has been removed, screw to the joists using the pilot holes on the deck surface and check level again



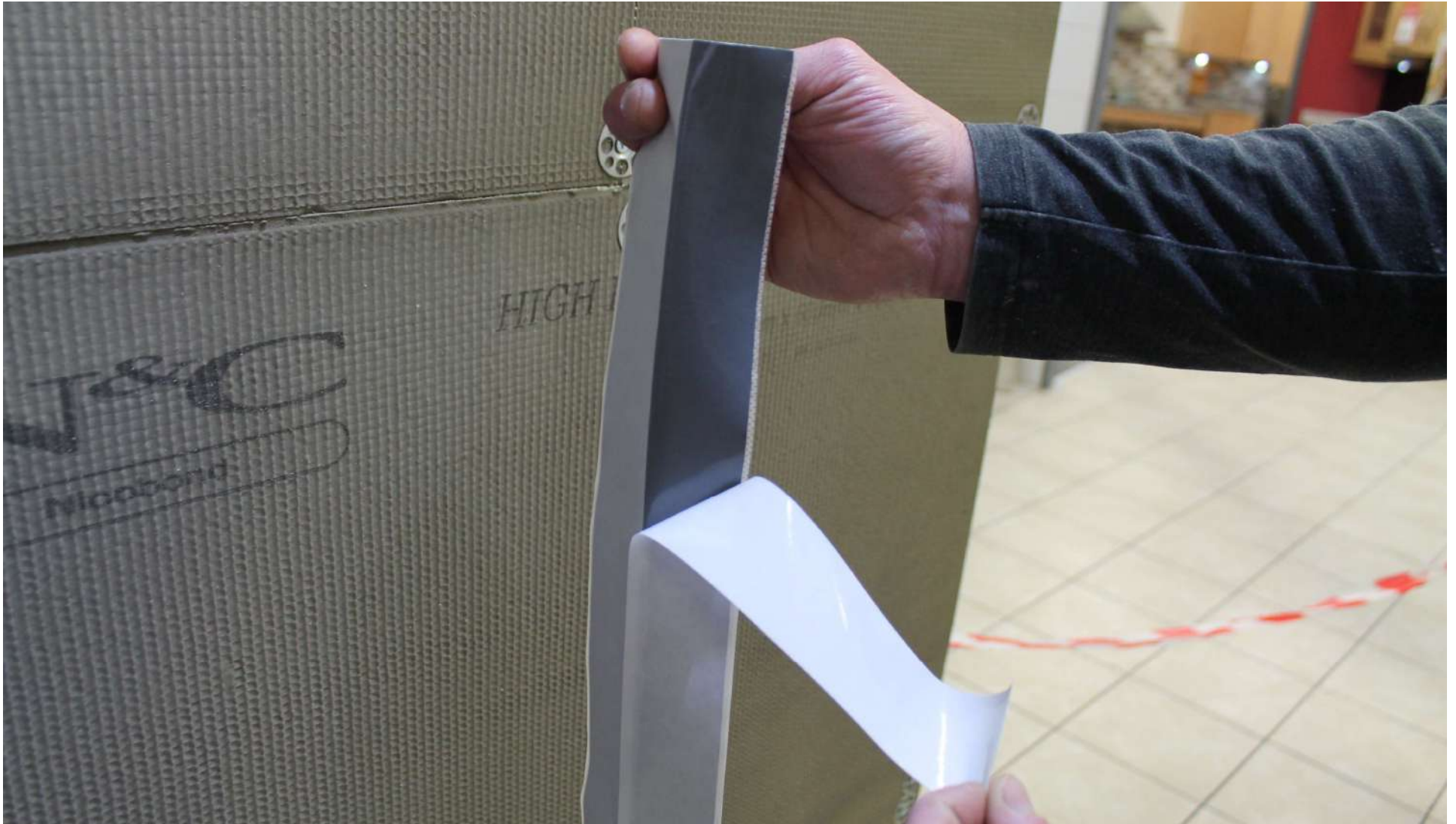
Fix Nicobond tile backer board, 10mm, to the timber floor to bring the floor level with the deck which is 28mm thick



Fix Nicobond tile backer board, 12.5mm, to the stud wall to meet the 12.5mm upstands of the sliding drain deck



Tip: Align the Nicobond Tile Backerboard Fixings adjacent to each other, close to the join between two boards. This will make application of Nicobond Self Adhesive Tanking Tape easier.



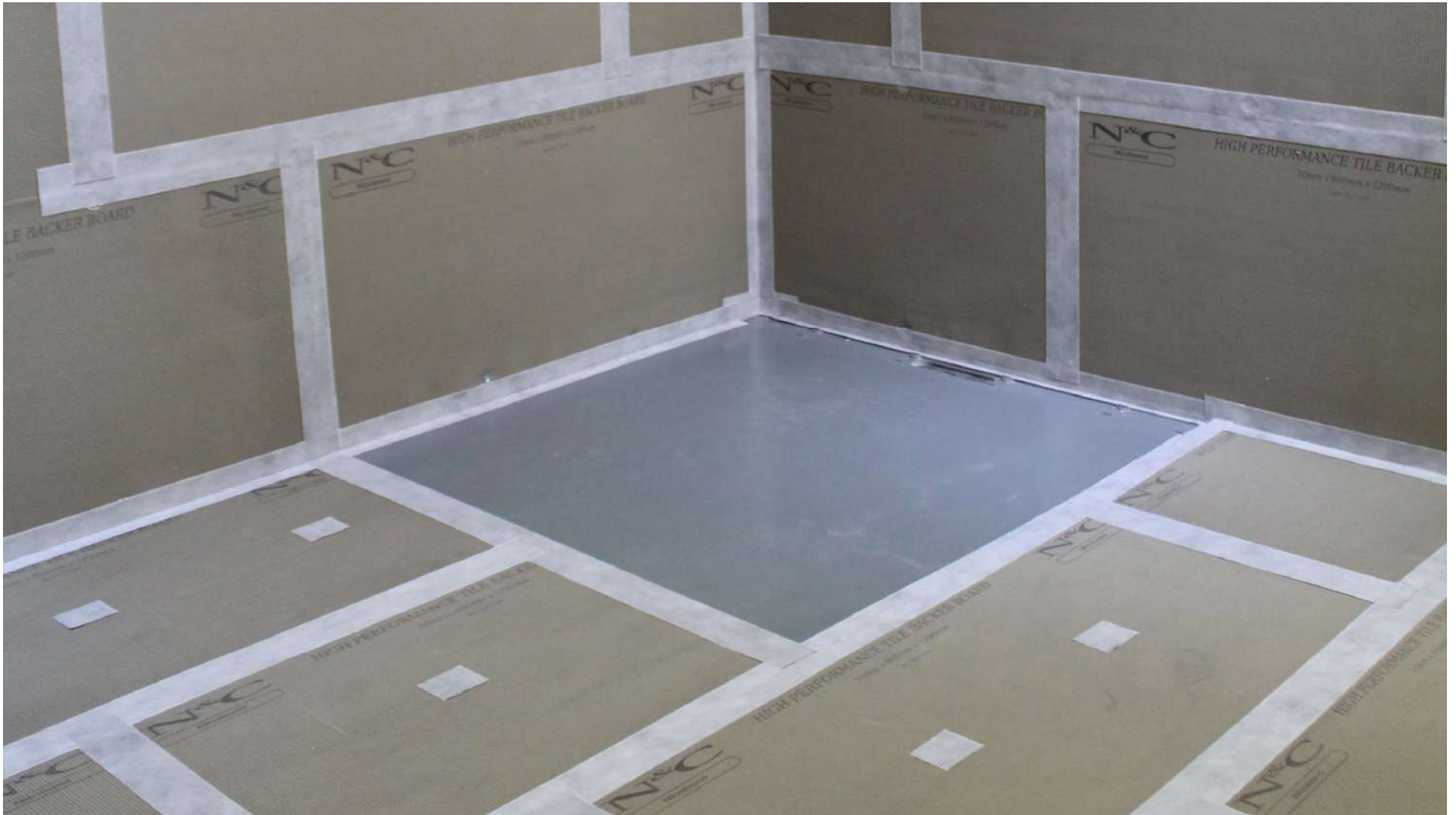
Tape the joints between the Nicobond tile backer board with Nicobond self adhesive tanking tape. The tile backer board fixings should be covered by the tanking tapes that you have applied.



Use internal/external self adhesive corner pieces at the corners to tank the join between the N&C Premier Infinity Shower Deck upstand and the Nicobond Tile Backer Board on the wall.



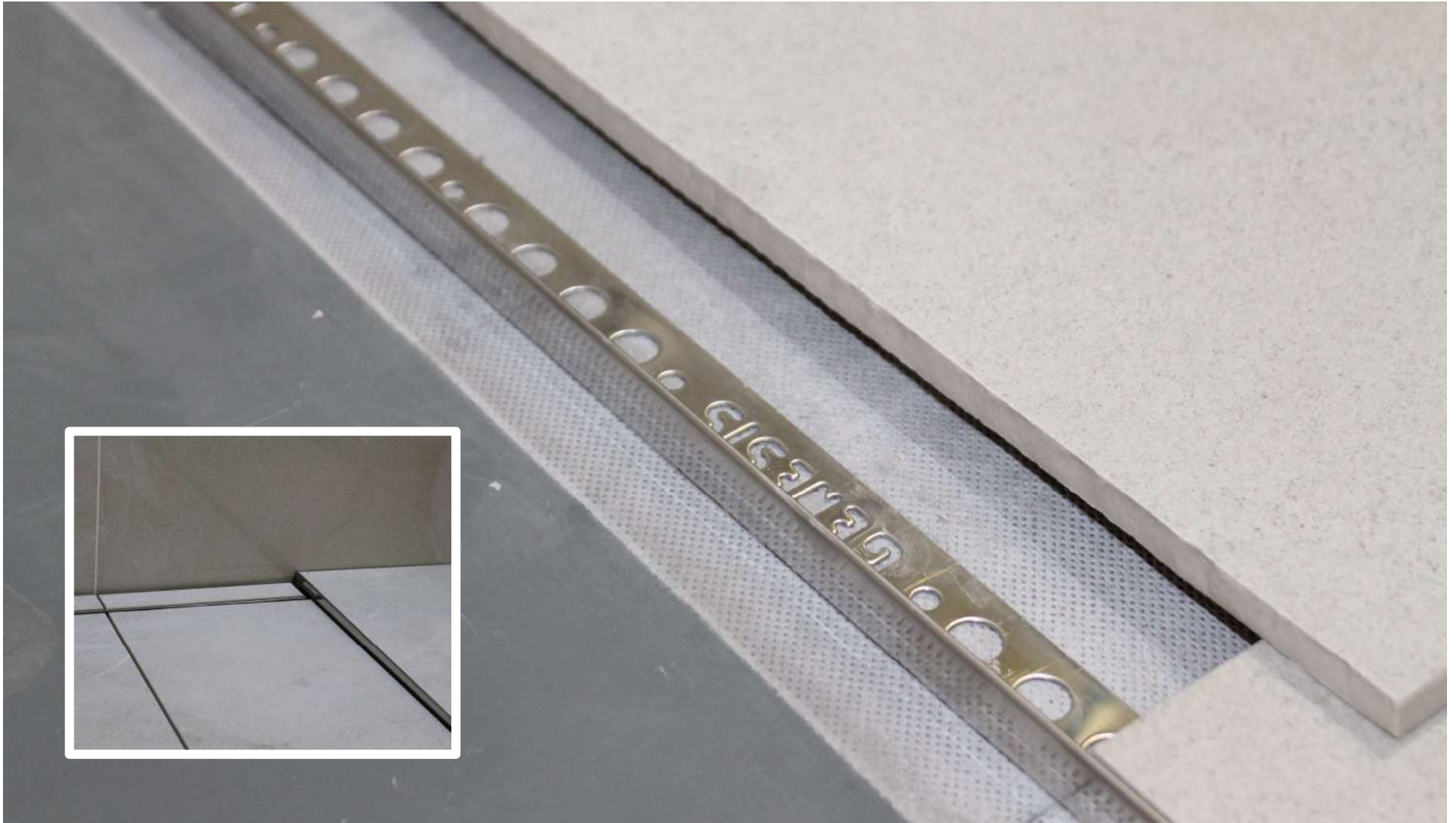
Repeat this action for all other joints between the N&C Premier Infinity Shower Deck and the Nicobond Tile Backer Board.



Ensure the room / shower area is completely tanked at this point, ensuring additional Nicobond Tile Backer Board fixings on the floor have been tanked. You are now ready to tile.



Tile the walls, the wall tiles to the rear of the deck behind the drain assembly should drop into the area behind the tile insert stainless steel grate.



Tile the floor area with one way falls to waste, insert the inclined s/steel trim to the open side of the deck to take the falls to waste. The inclined s/steel trim should be selected to suit your thickness of floor tile and the appropriate length to suit the selected N&C Premier Infinity Shower Deck.



Insert the pre-tiled stainless steel tile insert grate between the lugs preformed into the deck



The resulting appearance is an infinity drain line against the wall and around the tile insert section for waste water to flow from the shower area



Finally use Nicobond Starlike grout to grout the walls and floors of your tanked wet room for complete confidence that the system is impregnable to water ingress.

Now apply your wet room
screen, shower and
sanitaryware of choice...





IN&C